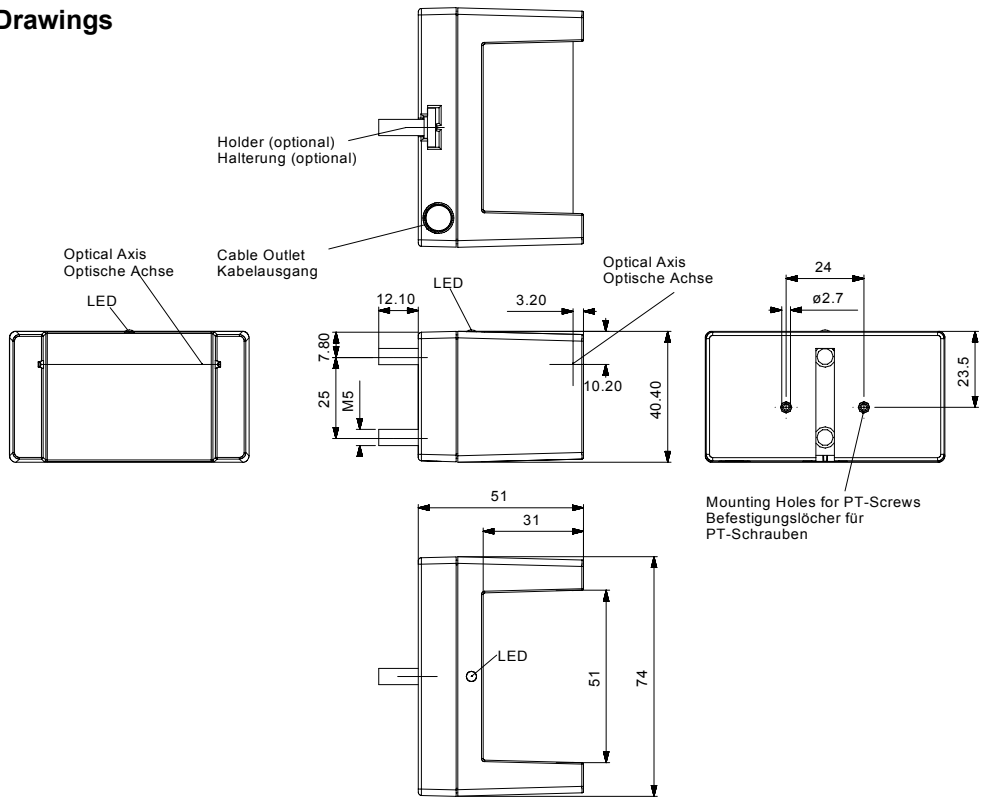


**Drawings**



(All dimensions in mm)

We  
**CEDES AG, CH-7302 Landquart / Switzerland**  
declare conformity in sole responsibility that the optoelectronic sensors  
**ceprox™ / GLS 151 NT**  
according to the following Council Directives



EU EMC 89 / 336 / EWG  
modified 92 / 31 / EWG

**Standards and Specifications**

EN 12015, 12016 Electromagnetic compatibility - product family standard for elevators, escalators and passenger conveyors - emission / immunity

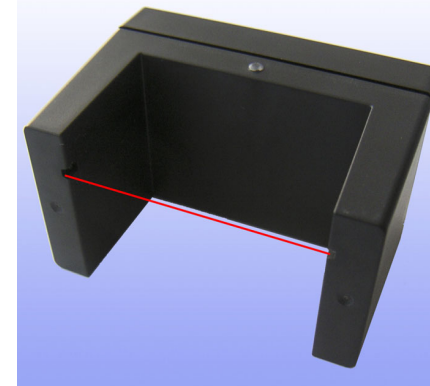
**Use:**

The bringing into service is only permitted after thorough checks are carried out to ensure that the machinery or plant into which these products are built, meets the requirements of the regulations and directives relevant to that machinery or plant.

Landquart, 2004-11-24  
Beat De Coi  
Quality Assurance

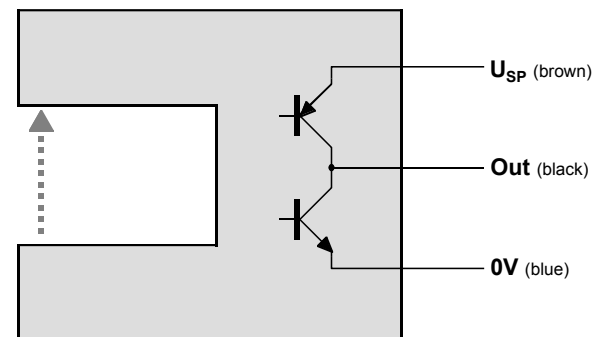
**Technical Data GLS 151 NT**

Supply voltage ( $U_{SP}$ )	10 - 30 VDC
Max. ripple voltage ( $U_{SP}$ )	$\pm 0.25 \times (U_{SP})$
Current consumption	max. 40 mA (without load)
Output saturation voltage NPN	$< 0.5 \text{ V}$ ( $I_L = 100 \text{ mA}$ )
Output saturation voltage PNP	$< 2.0 \text{ V}$ ( $I_L = 100 \text{ mA}$ )
Output	NPN / PNP short circuit proof
Capacitive load	max. 100 nF
Rise / fall time	max. 1ms
Max. output current	200 mA



**GLS 151 NT housing**

**Block circuit diagram**



Description	Light beam	Output	LED
<b>GLS 151 NT-NC</b>	not interrupted	+ 24 V ( $U_{SP}$ )	on
	interrupted	0 V	off
<b>GLS 151 NT-NO</b>	not interrupted	0 V	on
	interrupted	+ 24 V ( $U_{SP}$ )	off