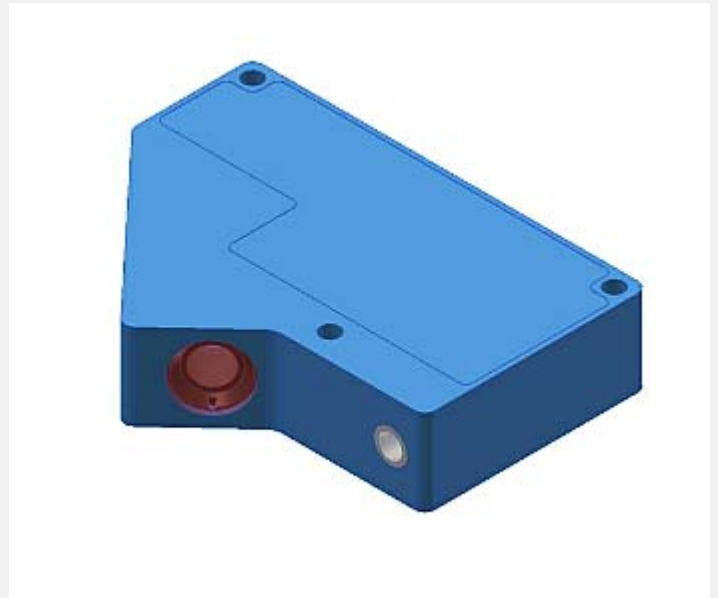


L-LAS Series

▶ L-LAS-LT-55

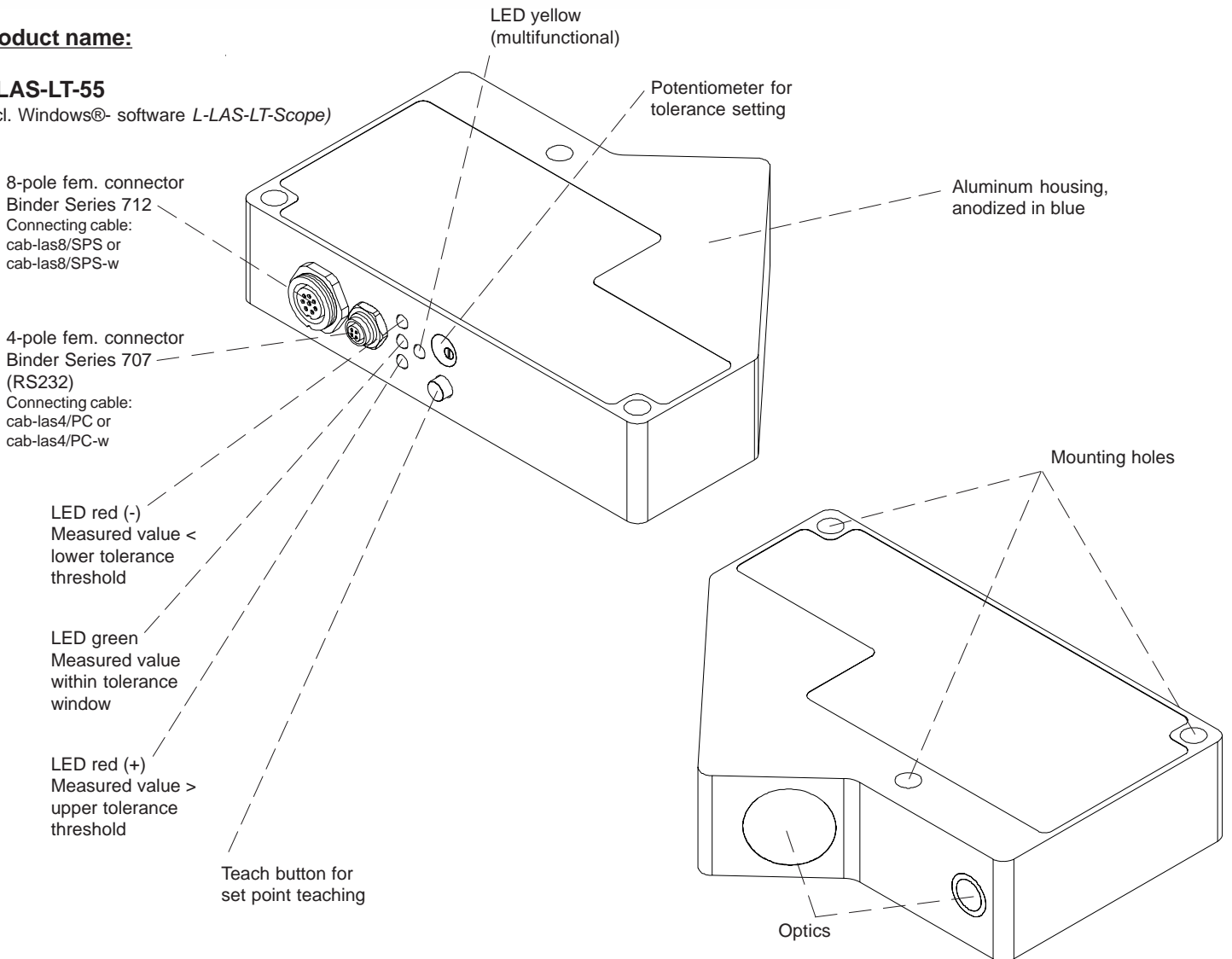
- Visible laser spot (red), class 2 laser product
- Reference distance 55 mm
- Measuring range typ. 10 mm, resolution typ. 0,01 mm
- Integrated interference filter / red light filter
- CCD line detector with 1024 pixel
- External teach button and potentiometer for tolerance setting
- RS232 interface and Windows® user interface
- 1 digital input
- 2 digital outputs, 1 analog output (0...10V)
- Switching state indication via 3 LEDs (1x green, 2x red)
- Sturdy aluminum housing
- Optics cover made of scratch-resistant glass



Design

Product name:

L-LAS-LT-55
(incl. Windows®- software *L-LAS-LT-Scope*)



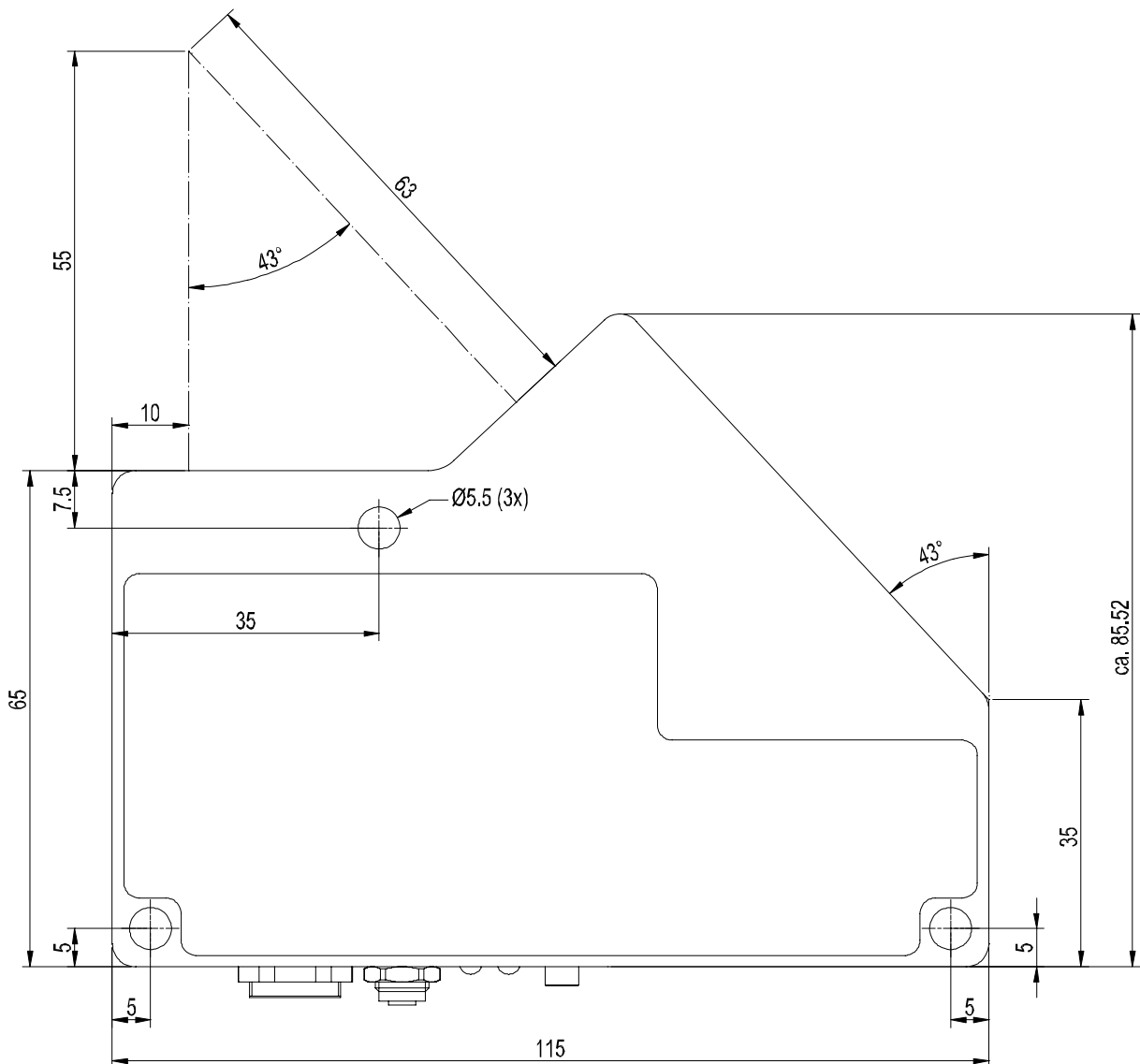
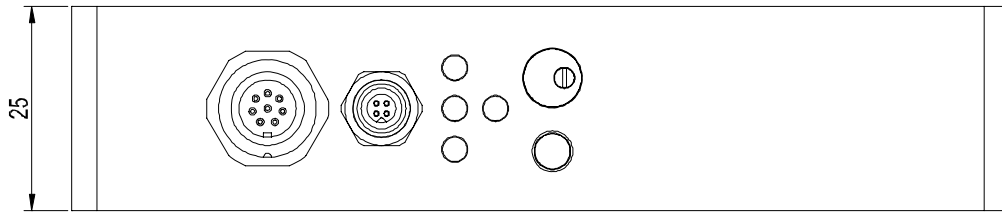


Technical Data

Model	L-LAS-LT-55
Laser	Semi-conductor laser, 670 nm, DC-operation, 1 mW max. opt. power, laser class 2 acc. to DIN EN 60825. The use of these laser sensors therefore requires no additional protective measures.
Optical filter	Interference filter, red light filter RG630
Analog output	0 ... +10V
Digital outputs (OUT0, OUT1)	pnp bright-switching/npn dark-switching or pnp dark-switching/npn bright-switching, adjustable under Windows®, 100 mA, short-circuit protected
Digital input (IN0)	input voltage +Ub/0V, with protective circuit
Voltage supply	+12VDC ... +30VDC
Sensitivity setting	under Windows® on PC and via integrated potentiometer
Laser power adjustment	adjustable under Windows® on PC
Voltage supply	typ. 200 mA
Protection	electronics: IP64, optics: IP67
Operating temperature range	-20°C ... +50°C
Storage temperature range	-20°C ... +85°C
Housing material	Aluminum, anodized in blue
Housing dimensions	LxWxH approx. 115 mm x 80 mm x 25 mm (without connectors)
Connector type	8-pole circular female connector type Binder 712 (PLC/Power) 4-pole circular female connector type Binder 707 (PC/RS232)
Potentiometer	3 revolutions, for adjustment of tolerance thresholds
Teach push button	at the housing for norm value setting
LED display	LED red (+) : Measuring value > upper tolerance threshold LED green : Voltage indication / visualization teach process LED rot (-) : Measuring value < lower tolerance threshold
EMV test acc. to	IEC - 801 ...
Measuring frequency	typ. 200 Hz / 400 Hz
Max. switching current	100 mA, short-circuit proof
Interface	RS232, parameterisable under Windows®
Connecting cables	Connection to PC: cab-las4/PC or cab-las4/PC-w (length max. 15 m) Connection to PLC: cab-las8/SPS or cab-las8/SPS-w (length max. 25 m)
Output polarity	bright-/dark-switching, can be switched over under Windows®
Reference distance	55 mm
Measuring range	typ. 10 mm
Resolution	typ. 0,01 mm



Dimensions



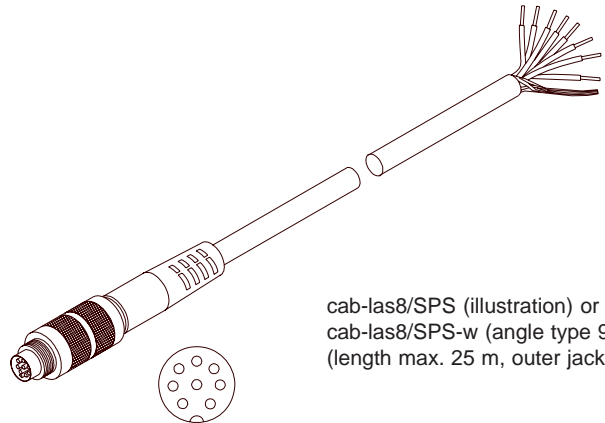
All dimensions in mm

Connector Assignment

**Connection to PLC:
8-pole fem. connector Binder Series 712**

Pin:	Color:	Assignment:
1	white	GND (0V)
2	brown	+24VDC
3	green	IN0
4	yellow	IN1 (n.c.)
5	grey	OUT0
6	pink	OUT1
7	blue	GND (0V)
8	red	ANA (0 ... +10V)

Connecting cable:
cab-las8/SPS or
cab-las8/SPS-w (angle type 90°)



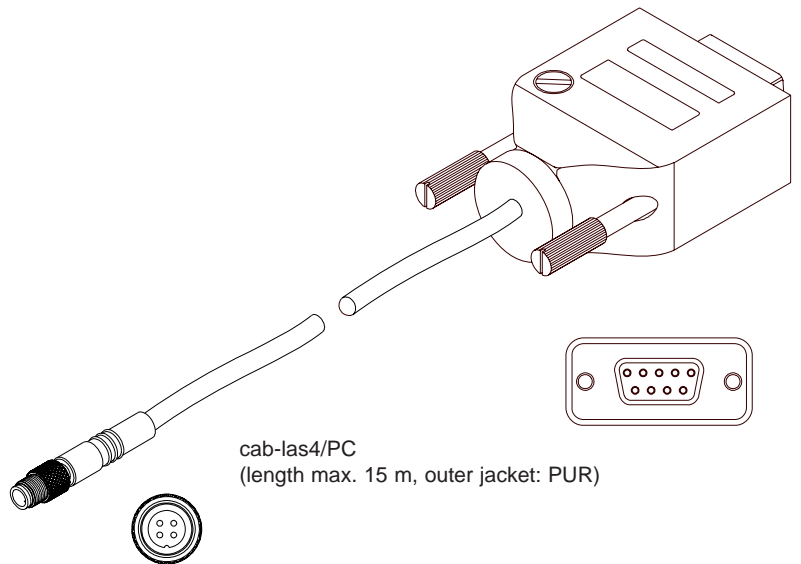
cab-las8/SPS (illustration) or
cab-las8/SPS-w (angle type 90°)
(length max. 25 m, outer jacket: PUR)

**Connection to PC:
4-pole female connector Binder Series 707**

Pin: Assignment:

1	GND (0V)
2	GND (0V)
3	RxD
4	TxD

Connecting cables:
cab-las4/PC or
cab-las4/PC-w (angle type)

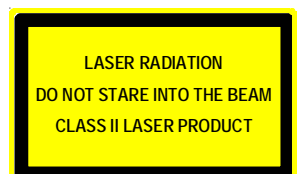


cab-las4/PC
(length max. 15 m, outer jacket: PUR)

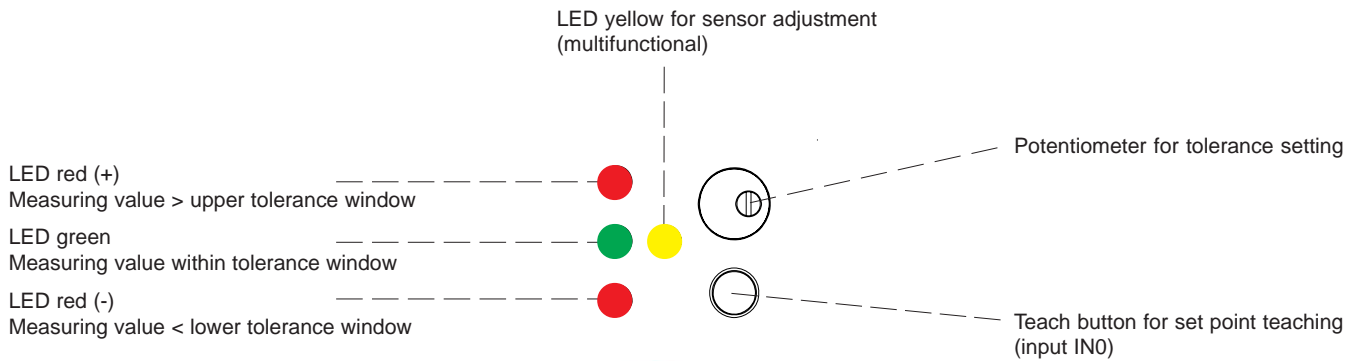
Laser Warning

The laser line sensors of L-LAS Series comply with laser class 2 according to EN 60825. The use of these laser transmitters therefore requires no additional protective measures.

The laser line sensors of L-LAS Series are supplied with a laser warning label.



LED Display



Parameterisation

Windows® software L-LAS-LT-Scope:

The L-LAS-LT sensor can be easily parameterised with the Windows® user interface. For this purpose the sensor is connected to the PC with the serial interface cable cab-las4/PC.

When parameterisation is finished, the PC can be disconnected again.

