



Belt-alignment switch ZS 92 SR -40°C ... +85°C IP66/67 Extreme

Features/Options:

- Temperature resistant from -40 °C to +85 °C
- High degree of protection IP 66 / IP 67
- Corrosion-resistant aluminium enclosure
- Screws and belt-alignment roller made of stainless steel
- With staggered contacts, adjustable from 5° to 35°
- Adjustable initial position of the belt alignment lever
- Back and base mounting possibility

Technical data

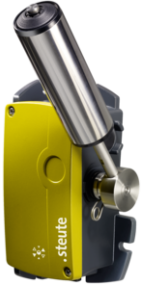
Standards	EN ISO 13849-1; EN 60947-5-1
Enclosure	corrosion-resistant aluminium, powdercoated, passivated, shock-proof, anthracite grey, similar to RAL 7016
Cover	corrosion-resistant aluminium, powdercoated, passivated, shock-proof, signal yellow, similar to RAL 1003
Tightening torque	cover screws: max. 2.5 Nm, actuator screws: max. 6 Nm
Degree of protection	IP 66/67 to IEC/EN 60529
Contact material	silver
Switching elements	2 NC/2 NO contacts, type Zb
Switching system	snap action, positive break NC contacts ⊖
Switching points	adjustable 5° to 35°; pre-adjustment setting 2 x 10°
Connection	screw connection terminals
Cable cross-section	max. 2.5 mm ² (incl. conductor ferrules)
Cable entry	2 x M25 x 1.5
B _{10d} (10 % load)	1.5 million
T _M	max. 20 years
U _{imp}	6 kV
U _i	400 V
I _{the}	6 A
Conditional short-circuit current	1100 A
I _e /U _e	6 A/400 VAC
Utilisation category	AC-15
Max. fuse rating	4 A gG/gN fuse
Ambient temperature	-40 °C ... +85 °C
Mechanical life	> 750.000 operations at max. 45° operating angle
Indicator lamp	as option

Errors and omissions excepted.



Belt-alignment switch ZS 92 SR -40°C ... +85°C IP66/67 Extreme

Ordering details



Snap action

2 NC/2 NO contacts

Type

ZS 92 SR 22 -40°C ... +85°C IP66/67 Extreme

Material no.

on request