

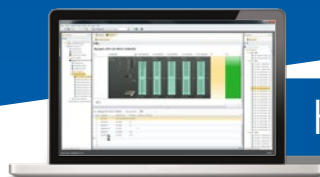
YASKAWA

SPEED7 Studio

Integrated Smart Engineering Tool



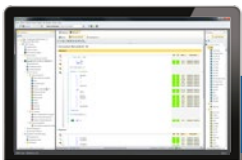
Integrated engineering



HARDWARE CONFIGURATION

Already during hardware configuration, SPEED7 Studio simplifies and facilitates your work. You save on time-consuming training immediately because of: clever Drag & Drop functions, tool tips, photo realistic display of the modules.

Numerous features support you during project engineering like the following examples from the large scope of functions: the automatic calculation of the current demand in the SLIO system, the integrated SPEED bus module, the online display of the digital I/Os.



PROGRAMMING

S7 editors and debug tools for IL, FBD and LAD are the instruments for programming with SPEED7 Studio. They are particularly easy to understand by means of: clearly structured color schema, clearly identified hierarchy levels, a cross-reference list, and many other features.

Diagnosis by means of module status and observation charts is possible - even with history and trend display.

”

We want to optimize reduce the efforts for de and save time and cos training. The user can engineer

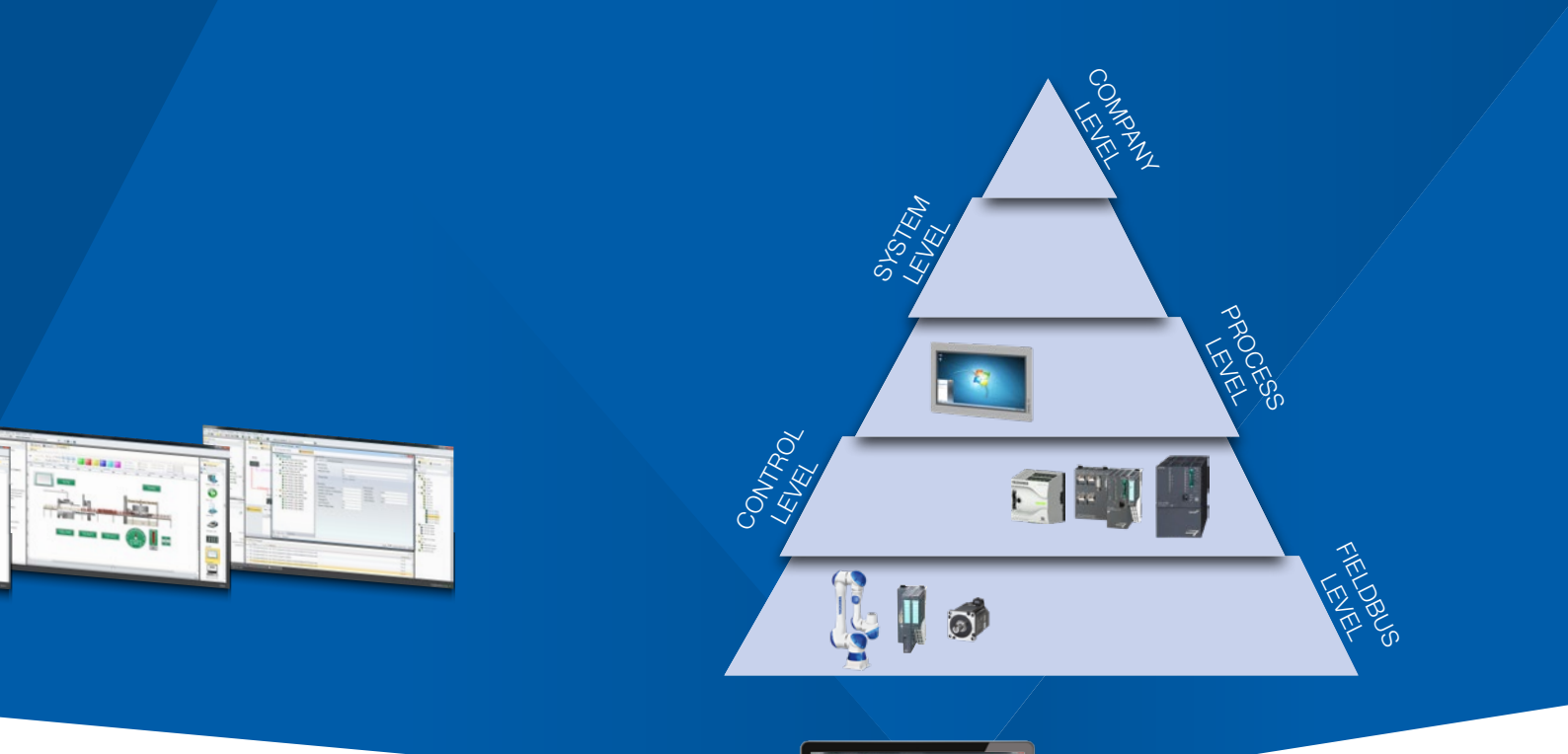


NETWORKING

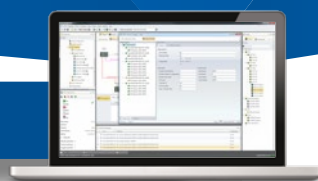
SPEED7 Studio makes networking via: PROFIBUS, PROFINET, EtherCAT, Standard-Ethernet and S7 connections consistently logical.

Independent from the bus protocol the topology view is always the same. Therefore the network configuration and the user allocation can be done quickly and easily. This combination of the standard STEP7 world and the EtherCAT world offers an unprecedented overview and reduces effort enormously.





DIAGNOSIS



Extensive test and diagnostic functions of YASKAWA CPUs, and the fieldbus systems PROFIBUS, PROFINET, and EtherCAT result in efficient and constructive trouble shooting in SPEED7 Studio. Considerably simplified access to EtherCAT by: automatic reading of the connected EtherCAT hardware, fast and clear project engineering and parameterization, complete network diagnosis.

The integrated PLC and HMI simulation bring following simplifications: A clear and structured test of complex systems beforehand, extreme simplification of the fault diagnosis through the newly developed real time recordings of the data points from the PLC, even at sporadically occurring faults. Besides this you can make a detailed analysis with the fully integrated logic analyzer.

VISUALIZATION



There are two visualization options:
 The web-based version with vector oriented graphics for the site and runtime independent access on your machines and plants via panel, laptop, smart-phone and tablet PC.
 The second version with the option of implementing extensive visualizations via SCADA interface.

With the joint variable household all project variables can be used with SPEED7 Studio for the visualization without interface loss.

the automation tasks development to a minimum not on intensive software get back to his current tasks. ”

SUPPORTED SYSTEMS

YASKAWA PLCs (MICRO, 200V, SLIO, 300S+) all YASKAWA Panels, YASKAWA inverters (A1000, GA700, etc.) as well as SIGMA5 and SIGMA7 Servo Drives

Tailor-made for you



The SPEED7 Studio – License model

PRO

- + All functions of the **BASIC** version
- + Axis configuration for **Inverters** and **Servo Drives**
- + PLCopen function blocks

- + **CAM editor** with CAM profiles according to **VDI 2145**
- + **Logic analyzer** for fast trouble shooting

BASIC

- + All functions of the **LITE** version
- + SCADA System Movicon for **ALL VIPA Panels & PanelPCs**
- + Access to **SigmaWin+**

- + S7 program without any memory limitation for **ALL YASKAWA PLCs**
- + Access to **DriveWizard Plus**

LITE

- Support of **ALL YASKAWA PLCs** with a S7 program size up to **128 KB**
- WebVisualization for **ALL YASKAWA PLCs**
- PLC and HMI simulation integrated
- **S7 editors** for STL, FBD and LAD



Modbus RTU
ASCII
STX/ETX
PROFIBUS
MPI



Modbus TCP
PROFINET
EtherCAT
S7-COM

30
days demo

Test our engineering tool for 30 days in **FULL** functionality (PRO). After the expiry you can decide for one of the three license versions.

YASKAWA Europe GmbH

Drives Motion Controls
Ohmstraße 4
91074 Herzogenaurach
Germany

Tel.: +49 (0) 6196 569-500
E-Mail: support@yaskawa.eu
www.yaskawa.eu.com

05/2022