

# Product Overview

IAI ROBOT LINEUP

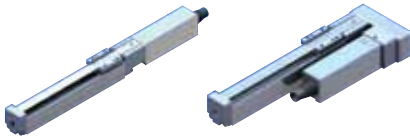
Industrial Automation Robots



# Mini ROBO Cylinder

Next-generation electric actuators, the solution for space constrained applications

## RCP3 MINI SLIDER TYPE

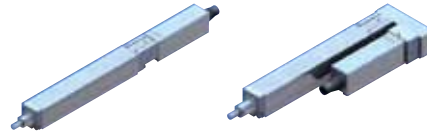


Motor Coupled Type

Side-Mounted Motor Type

- 150mm
- 300mm/s
- 1 kg
- $\pm 0.05\text{mm}$

## RCP3 MINI ROD TYPE



Motor Coupled Type

Side-Mounted Motor Type

- 150mm
- 300mm/s
- 1 kg
- $\pm 0.05\text{mm}$

- The coupled motor makes replacement easy.
- The straight type (motor coupled type) and the side-mounted motor type are also available.

## RCA2 MINI ROD TYPE



Short Nut-Mounting Type



Short Tapped-Hole Mounting Type



Short Slide Unit Type with Single Guide



Short Free Mounting Type with Double Guides



Short Slide Unit Type with Double Guides

- 75mm
- 300mm/s
- 6 kg
- $\pm 0.02/\pm 0.05\text{mm}$

- The unitized motor type has significantly reduced in length.
- If an application requires extra rigidity and linearity, you can choose from single and double built-in guides. The non-guide types allow external guide(s) to be attached, which help significantly reduce the actuator size.

## RCA2 MINI TABLE TYPE



Short Compact Type



Short Wide Type



Short Flat Type

- 30mm
- 270mm/s
- 6 kg
- $\pm 0.02/\pm 0.05\text{mm}$

## RCP3/RCA2 MINI TABLE TYPE



Motor Coupled Type

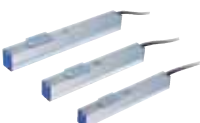


Motor Coupled Type with Side-Mounted Motor

- 100mm
- 300mm/s
- 3 kg
- $\pm 0.02\text{mm}$

- The built-in guide allows the actuator to receive overhung loads.
- Actuators with long strokes are also available.

## RCL MINI LINEAR SERVO



Micro Slider Slim Type



Micro Slider Long Stroke Type



Micro Cylinder

- 288mm
- 1600mm/s
- 3.2 kg
- $\pm 0.1\text{mm}$

- With the use of linear motors, these actuators can operate at high speeds and high acceleration/deceleration with G-forces up to 2G.
- Slider and rod types are available. The slider type is classified into six sub-types according to size and stroke.
- The multi-slider type has two sliders installed on one axis, where both sliders can be operated separately.

# ROBO Cylinder®



The affordable high-precision electric actuators reduce your running costs to 1/5 of a pneumatic system. ROBO Cylinders are high-performance electric actuators with a ball screw, linear guide and AC servo motor or DC servo/stepper motor. These next-generation actuators offer multi-point positioning capability and speed/acceleration change function unseen with air cylinders.

## ERC2 SERIES CONTROLLER INTEGRATED TYPE



Motor Coupled Slider Type



Motor Coupled Rod Type

- The ERC2 Series have built-in controllers which simplify set up and use.
- High-precision, performance and rigidity all in an affordable package.

## RCP2 SERIES PULSE MOTOR TYPE



Slider Type



Slider Belt Type



Rod Type



Rod Type with Guide



High Thrust Type



Rotary Type



Large Diameter Hollow Rotary Type



Gripper Type



Small Gripper



High Grip Force Type



Three Finger Gripper

- High push force is achieved with the use of stepper motors.
- Many different sizes and variations are available to meet a wide range of applications.

## RCP3 SERIES



Table Type



Slider Type



Short Body Type



Short Body Type with Guide

## RCA SERIES 24V SERVO MOTOR TYPE



Motor Coupled Rod Type



Side-Mounted Motor Rod Type



Guided Rod Type



Slider Type



Side-Mounted Motor Type

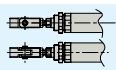


Table Type

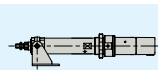


Slider Type

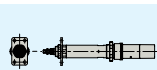
- Shaped similar to a rod-type air cylinder, these actuators accept various mounting brackets that are used on air cylinders.
- Three motor installation methods are available to choose from.
- An optional home check sensor can be set.



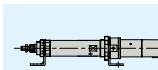
[Knuckle joint]



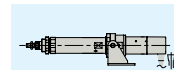
[Front trunnion]



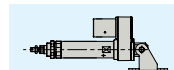
[Flange]



[Foot]



[Rear trunnion]



[Clevis]

## RCA2 SERIES

## RCS2 SERIES 100V/200V SERVO MOTOR TYPE



Slider Type



Side-Mounted Motor Slider Type



Slim Rod Type



Short Rod Type



Ultra High Thrust Rod Type



Guided Rod Type

## RCP3 SERIES



Aluminum-Base Type



Steel-Base Type

- Equipped with a servo motor, these actuators support high loads and long strokes.
- When an XSEL controller is used, you can combine three or more axes.
- Connectable to DeviceNet, ProfiBus, ModBus and CC-Link.

# Single Axis Robot



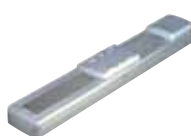
Intelligent actuators with high-speed, high-transfer capabilities



Standard Type: **ISB**  
High-Precision Type: **ISPB**



High-Rigidity Type  
(Steel-Base)  
**SSPA**



Simple Dust-proof Type  
**ISDA/ISPDA**



High-Rigidity  
Belt-Drive Type  
**IF**



Slim Type / Belt-Drive Type  
**FS**



Rotary Type  
**RS**



Vertical/Rotation  
Integral Type: **ZR**



Nut Rotating Type  
**NS**

- Many variations are available to meet diverse applications.
- The guide is integrated with the base.
- Speeds of up to 2400mm/s and 150kg payload.
- Strokes go as long as 3000mm with the NS series actuators.

## Cleanroom Type

Dedicated cleanroom types conforming to cleanliness class 10



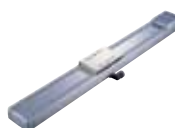
24V Pulse Motor  
**RCP2CR**



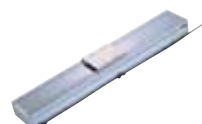
24V Servo Motor  
**RCACR**



200V Servo Motor  
**RCS2CR/RCS3CR**



Standard Type  
**ISDACR**



High-Precision Type  
**ISPDACR**



Anti-Static Type  
**ISDACR-ESD**



Small Gripper  
**RCP2CR-GR**



SCARA Robot  
**IX-NNC**



Ultra-Compact  
SCARA Robot  
**IX-NNC**

- The highly sealed structure achieves operation in conformance with cleanliness class 10.
- Wide variations are available, including ROBO Cylinders and single-axis/SCARA robots.

## Splash-proof/Dust-proof Type

Protection conforming to IP54–IP67, these actuators are the solution when the environment is less than desirable



Slider Type  
**RCP2W-SA16C**



Slider Type  
**ISWA/ISPWA**



Pulse Motor Rod Type  
**RCP2W-RA4C/RA6C**



High-Thrust Rod Type  
**RCP2W-RA10C**



24V Servo Motor  
Rod Type  
**RCAW-RA3/RA4**



200V Servo Motor  
Rod Type  
**RCS2W-RA4**



Small Gripper (Dust-proof)  
**RCP2W-GR**



SCARA Robot  
**IX-NNW**

- These actuators handle environments with extreme dust or water splashes.
- Many variations are available to meet diverse applications.

# TT Table Top Type

**TABLE TOP TT**



2-axis Gate Type



3-axis Gate Type



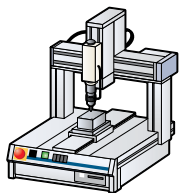
2-axis Cantilever Type



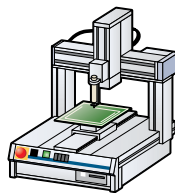
3-axis Cantilever Type

- These all-in-one actuators are ideal for cell production and R&D applications. The 200mm x 200mm and 400mm x 400mm type are available as standard products.
- The TT is equipped with a rigid base, servo control motor and an encoder to prevent mis-stepping.
- All models come with a built-in XSEL controller which is popular for its ability to achieve high tracing precision and constant speed operation.

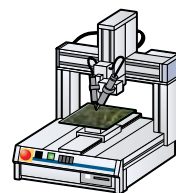
## Driving Screws



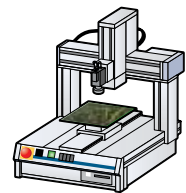
## Coating



## Soldering



## Circuit Board Inspection



# Cartesian Robots

Get your ROI quickly with pre-configured cartesian robots that reduce installation and setup times

## ICSA2/ICSPA2 2-AXIS COMBINATION



Y-axis Base Fixed Type  
**XYB**



Y-axis Slider Fixed Type  
**XYS**



Z-axis Base Fixed Type  
**XZ**



Z-axis Slider Fixed Type  
**YZ**

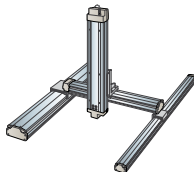


Gantry Type  
**XYG**

## ICSA3/ICSP3 3-AXIS COMBINATION



XYB+Z axis Type

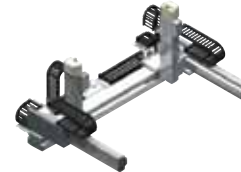


XYG+Z axis Type



X-axis Nut Rotation Type  
X-axis Linear Servo Type

## ICSPA6 6-AXIS COMBINATION



X-axis Nut Rotation, Multi-Slider Type  
X-axis Linear Servo, Multi-Slider Type

## IK SERIES MULTI-AXIS ROBO CYLINDER KITS



## ZR UNIT

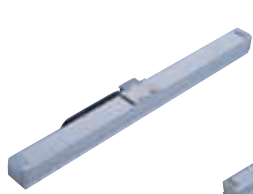


- Many variations are available to support 2 to 6 axis configurations.
- The multi-slider types (ICSPA4/ICSPA6) let you reduce space and cycle time.
- We can also design specifications with rotational axis(es).
- Customize the optimum model that suits your specific needs.

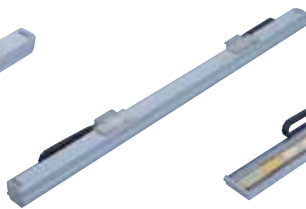


# LSA Series Linear Servo Actuator

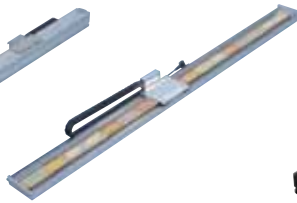
A full lineup of linear servo actuators to meet your need  
Max load capacities of up to 120kg and max strokes of up to 4m



Shaft Type  
**LSA-S**



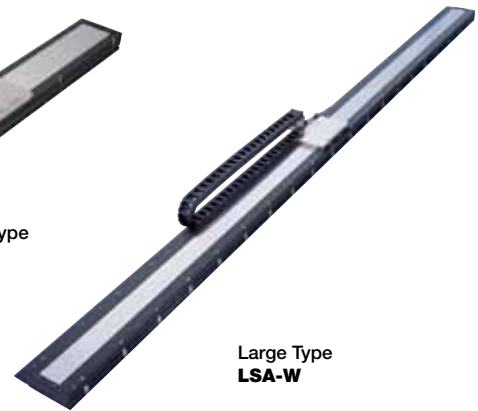
Compact Type  
**LSA-H**



Flat Type  
**LSA-L**



Medium Type  
**LSA-N**



Large Type  
**LSA-W**

- High-speed and high-precision is kept even at long strokes.
- Supports high accelerations of up to 3G and high speeds up to 2.5m/s.
- Multi-slider types supporting synchronized operation are also available.

## IX Series SCARA Robots

The IX SCARA robots feature high performance and functionality



**SCARA ROBOT** ARM LENGTH 250/350/500/600/700/800 MM



Standard Compact  
Type



Standard Medium  
Type



Standard Large  
Type



High-Speed  
Type



Wall Type



Ceiling Type

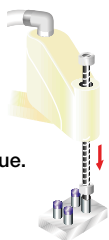
- Achieves high speeds and repeatability.
- Easy programming makes these actuators much more user-friendly.
- Many variations are available to support arm lengths of 250 to 800mm.

**ULTRA-COMPACT SCARA** ARM LENGTH 120/150/180 MM

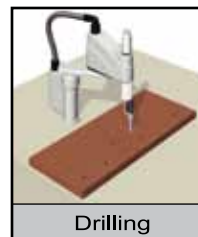
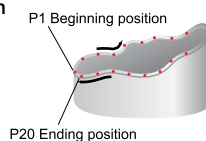


- The compact size of the robot allows you to reduce the size of your production facility.
- The rated loading capacity is 0.2 kg, and can be increased to 1 kg.
- High-speed performance with a cycle time of 0.35 sec.

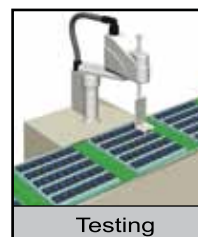
**Z-axis Push Function**  
Enables you to easily apply compression force and torque.



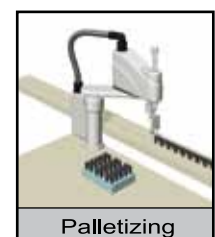
**3D Path Capability**  
Faster CPU speed and rigid robot construction, along with 3D arc motion & path control, allow for easy, accurate path tracing.



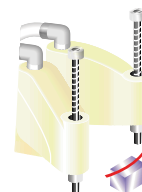
Drilling



Testing



Palletizing



**Interference Check Zones**  
A maximum of 10 user-defined check zones can be set inside the robot's operation range.

# Controller

Position Controllers & Program Controllers

Wide operation patterns for your specific needs

## 3-POSITION CONTROLLER

**PMEC**



RCP2/RCP3

**AMEC**



RCA/RCA2/RCL

- Power supply, acceleration/speed change function included.
- Operation as easy as any air-cylinder system's.

**PSEP**



RCP2/RCP3

**ASEP**



RCA/RCA2/RCL

- Use the same signals as air-cylinder solenoid valves.
- Standard and dust-proof specifications are available.
- The dust-proof specification has a protective structure conforming to IP53, allowing it to be installed outside the control panel.

## POSITION CONTROLLER

**PCON**



RCP2/RCP3  
Position Controller

**ACON**



RCA/RCA2/RCL  
Position Controller

**SCON**



RCS2/RCS3  
- Cartesian - Linear Servo  
Position Controller

**SCON-CA**



- PCON/ACON controllers are available in: Positioner/Solenoid valve/Pulse-train input/Serial communication types.
- SCON controllers are an all-in-one controller that conforms to all control methods.
- Up to 512 positions can be set.
- DeviceNet, CC-Link and other field networks can be supported.
- SCON-CA comes with force control and vibration control functions.

## ROBO NET



RCP2/RCP3/RCA/RCA2/RCL  
Network Controller



Simple Absolute



Expansion Unit

- The simple absolute unit is an encoder backup that connects to a PCON/ACON controller to eliminate the need for home return.
- ROBONET minimizes wires and operates on DeviceNet, CC-Link or other networks.
- Link and operate up to 16 axes.

## PROGRAM CONTROLLER

**PSEL**



RCP2/RCP3  
Program Controller  
1-2 axis

**ASEL**



RCA/RCA2/RCL  
Program Controller  
1-2 axis

**SSEL**



1-2 axis  
RCS2/RCS3  
- Cartesian - Linear Servo  
Program Controller

**XSEL**



1-6 axis

- PSEL/ASEL/SSEL controllers support interpolated operation and are used to set one or two axes.
- XSEL controllers can operate up to 6 axes.
- All controllers support DeviceNet, CC-Link and other field networks.

# Power supply

Low-cost 24VDC power supply ideal for powering actuators



PS-24

- Accelerate an actuator with maximum momentary current output of 17A.
- Up to 5 units can be operated in parallel.
- The load factor detection function lets you monitor the load condition of the unit.

# Teaching Pendant

Programming points have never been easier  
(ANSI type offering enhanced safety is available)



PCON/ACON/SCON/  
ROBONET/PSEP/ASEP/PMEC/AMEC  
**CON-PT-M-ENG**



PCON/ACON/SCON/  
ROBONET  
**CON-T-ENG**



PCON/ACON/SCON/  
ROBONET  
**RCM-E-ENG** (Simple Teaching Pendant)



---

**IAI America, Inc.**

**Headquarters:** 2690 W. 237th Street Torrance, CA 90505 (800) 736-1712

**Chicago Office:** 1261 Hamilton Parkway Itasca, IL 60143 (800) 944-0333

**Atlanta Office:** 1220 Kennestone Circle, Suite 108, Marietta, GA 30066 (888) 354-9470

**IAI Industrieroboter GmbH**

Ober der Röth 4, D-65824 Schwalbach am Taunus, Germany

**[www.IntelligentActuator.com](http://www.IntelligentActuator.com)**

